



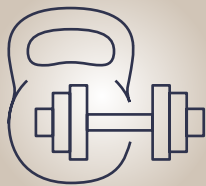
LEE HWA JEWELLERY

# Jewellery Care Guide

PROLONG THE LIFE OF YOUR JEWELLERY  
WITH OUR CARE INSTRUCTIONS.



Avoid contact with chemicals, lotions,  
scents and other cosmetics.



Remove jewellery while performing  
physically intensive tasks.



Remove jewellery when swimming  
or during spa.

## STORING JEWELLERY AT ITS PRISTINE CONDITION

Put on your jewellery only after applying  
your make-up and perfume as chemicals can and may  
lead to discoloration of your jewellery.

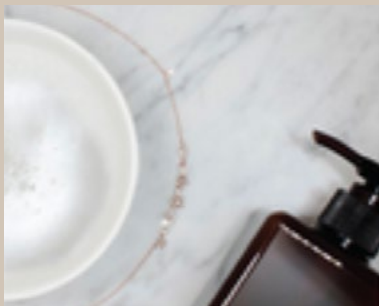
It is best to store diamond jewellery separate from  
other pieces to prevent scratches.



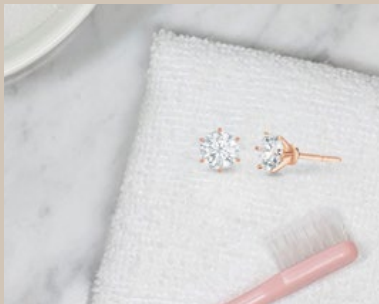
LEE HWA JEWELLERY

# Jewellery Care Guide

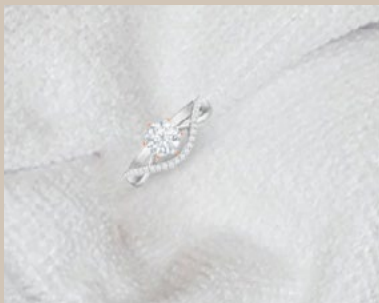
A SPA RETREAT FOR YOUR JEWELLERY



1. Soak your jewellery in mild detergent solution for 5-10 minutes. Remember to avoid using abrasive detergents like bleach or chlorine.
- 



2. Gently clean your jewellery with a soft brush to remove any stubborn dust or dirt.
- 



3. Pat dry with a soft microfibre cloth.
- 



4. Bring your jewellery to a Lee Hwa Jewellery boutique for frequent cleaning and polishing.